

Gift by Bequest

Giving through the Community Foundation

A **bequest** gives you peace of mind that your support for favorite causes will continue beyond your lifetime.

Giving through a bequest may be appropriate if ...

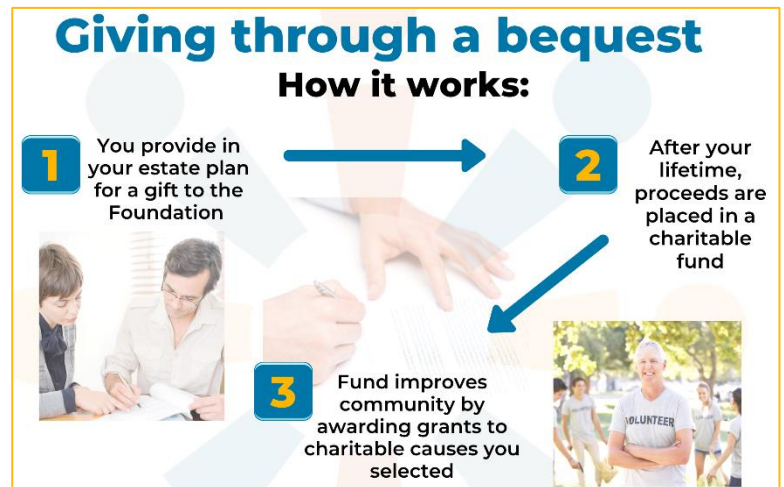
- You want the ability to access your gift assets during lifetime, for any reason.
- You don't need an immediate tax deduction.
- You want the flexibility to change your gift at any time.

What benefits will I enjoy?

The flexibility offered by bequests has made them the most popular form of “deferred” gift. A charitable bequest allows you to retain full ownership and use of your assets during your lifetime. You may also change the size or purpose of your charitable bequest at any time, and for any reason. A bequest pairs this flexibility with peace of mind, ensuring that your charitable wishes – whatever they might be at the time of your death – will be carried out when your thoughtful estate gift is distributed to the Community Foundation.

Because a charitable bequest is revocable – that is, you can change your estate provisions at any time – you will not receive an income tax deduction for your future gift. If your estate is taxable, however, your charitable bequest will generate an estate tax deduction when the proceeds are paid to the Community Foundation.

(Please see reverse side)



Let us know:

Please let us know if you've named the Community Foundation as a beneficiary of your estate plan. We would welcome the opportunity to thank you and invite you to join the Himebaugh Legacy Circle.

Ten reasons why people choose to give through the Community Foundation

one

We are a **local organization** with deep roots in the community.

two

Our Community Engagement staff has **broad expertise** in community issues and needs.

three

We provide highly **personalized service** tailored to your charitable interests.

four

Our funds offer a way to **invest in the causes** you care about most.

five

We accept a **wide variety of assets** and can facilitate the most complex forms of giving.

six

We partner with **professional advisors** in the region to create highly effective approaches to charitable giving.

seven

We offer maximum available **tax advantage** for most gifts under federal law.

eight

We **multiply the impact** of the gift dollars by pooling them with other gifts and grants.

nine

We build **endowment funds** that benefit the community forever and help create personal legacies.

ten

We are a **community leader**, convening agencies and coordinating resources to drive transformative change.

How do I make a charitable bequest?

Your attorney can recommend the best approach – a new will or codicil, trust or trust amendment, or other documents – for your situation.

In your estate documents, you'll want to identify the assets you plan to give to the Community Foundation. Many people prefer to give a percentage of their "residuary estate" – that is, a percentage of the estate assets remaining after all probate expenses, taxes and gifts of specific items or fixed dollar amounts have been paid.

This approach ensures your charitable gift stays in proportion to other gifts you plan to make through your estate, even as your assets increase or decrease over time. You may, instead, provide for a specific sum or item to be distributed to the Community Foundation through your estate.

You'll also want to specify how your thoughtful estate gift is to be used by the Community Foundation. Most people prefer to direct their bequests to a particular charitable fund, or to provide for the creation of a new fund through their estate. You may also choose to support the community's most compelling needs by leaving your gift unrestricted. If your bequest is intended to create a new charitable fund within the Community Foundation, we recommend you or your attorney share your goals for the fund with us so that we'll be prepared to carry out your charitable wishes when the time comes.

It is important your estate documents describe your intended gift clearly, completely and accurately. We offer the following language to you and your attorney as an example:

I give [identify specific assets, dollar amount, or percentage of residuary estate to be given] to the Community Foundation for the Fox Valley Region, Inc., in Appleton, Wisconsin. This gift is to be used [specify purpose – e.g., to address the community's greatest needs, or to establish or be added to the [Name of Fund] within the Foundation].

Please contact us at 920.830.1290 if we can assist you and your attorney to develop a bequest that suits your charitable goals.

Rev 5.20