



## Albert H. Schulze Memorial Music Scholarship

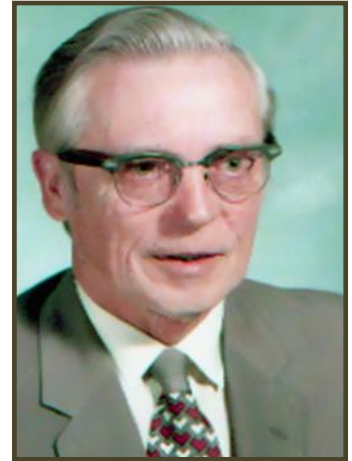
The Albert H. Schulze Memorial Music Scholarship Fund was established within the Community Foundation in 2000 by family members to honor a man who dedicated his life's work to excellence in music.

Albert was born on May 4, 1911 in Clear Lake, Wisconsin. After completing high school, he received a degree in Business Administration from River Falls State College in River Falls, Wisconsin and a master's degree in Education Administration from the University of Colorado. He continued his studies at the University of Vienna, Austria and the Mozarteum Conservatory of Music at Salzburg, Austria.

His teaching career began in the Owen Withee Public School System in north-central Wisconsin in 1933. In 1958 he moved to Neenah, Wisconsin, where he taught music at Neenah High School until his retirement in 1975. His dedication was evidenced in his attendance record – not one missed day of school in his 42-year teaching career.

Albert was decorated numerous times for his achievements as a sergeant in the U.S. Army during World War II, and was active in various veterans organizations. He also conducted the Army band that celebrated the liberation of cities across Europe in 1944 and 1945.

Albert founded the Neenah Community Band in 1966 and was its director until appointed Director Emeritus in 1987. A man who lived life with enthusiasm and great humility, Albert passed away on May 9, 2000 at age 89.



### Eligibility:

High school seniors from Neenah High School who plan to pursue a music education major at a four-year accredited college or university. Students must have a minimum cumulative GPA of 3.0.

### Award Amount:

One non-renewable scholarship award up to \$600.

### Selection:

Recipients are selected each spring by the High School Scholarship Selection Committee. Selection will be based on the student's performance in the areas of music, academics, leadership, initiative and character.

### Payment Procedure:

Scholarship payments will be released after submission of the following to the Community Foundation for the Fox Valley Region: completed scholarship verification form (located on our website, [www.cffoxvalley.org/scholarships](http://www.cffoxvalley.org/scholarships)), proof of major, and verification of full time student status (class list with credits listed). After approval of submitted documentation, the scholarship check will be paid directly to the school the recipient will be attending during the first semester of the freshman year of college. This scholarship cannot be deferred. Most communications between the Community Foundation and the student will be via email. ***Please keep us advised of your current email address.***

### Loss of Eligibility:

Failure to register as a full-time student for the first semester of freshman year of college with a music education major.

### Further Information:

For more information regarding this scholarship please contact your high school guidance office or visit the Community Foundation for the Fox Valley Region's website at [www.cffoxvalley.org/scholarships](http://www.cffoxvalley.org/scholarships) or contact us at [scholarships@cffoxvalley.org](mailto:scholarships@cffoxvalley.org) or call 920-702-7619.